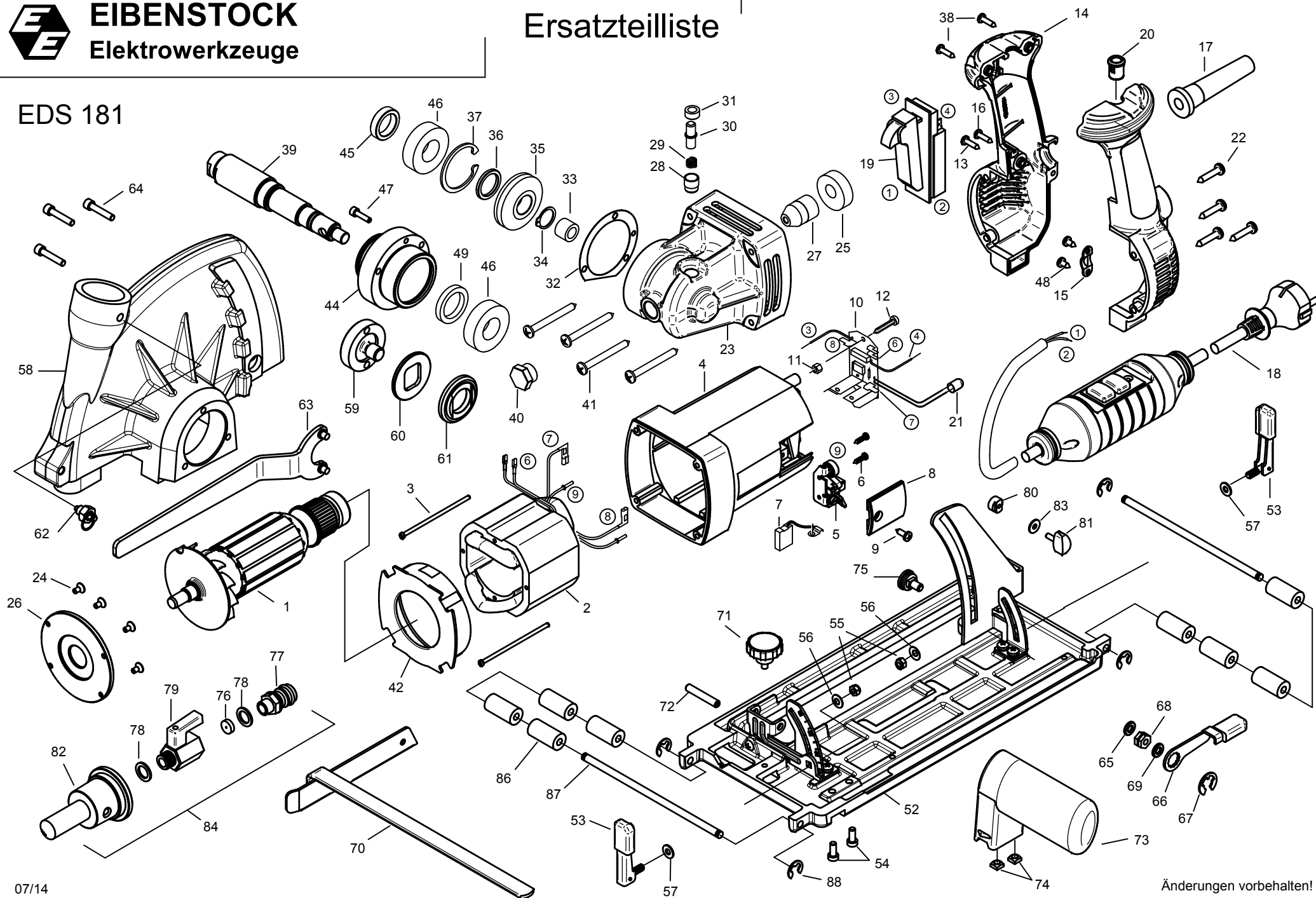




EIBENSTOCK
Elektrowerkzeuge

Ersatzteilliste

EDS 181



EDS 181 - 230 V

0660P000

No.	Description	Order No.	Pcs
1	rotor complete	76711100	1
2	stator complete	76711150	1
3	special screw Meplast 3x78	80201234	2
4	motor housing	80900069	1
5	brush holder	80201199	2
6	self tapping screw HC 2,9x13	80201252	4
7	carbon brush 6,3x16x20L82F10	80700044	2
8	brush holder cover	80900073	2
9	self tapping screw HC 4,2x13	80201270	2
10	PCB / circuit board	80601155	1
11	plastic nut M5	80201295	2
12	self tapping screw HC 4,2x25	80201273	2
13	self tapping screw HC 4,2x22	80201272	1
14	handle segment	80900400	1
15	wire locking flange	85000020	1
16	self tapping screw HC 3,9x13	80201261	1
17	cable grommet	83000004	1
18	connecting cable 2x1,5mm², 5 m	7660A262	1
19	switch	80600506	1
20	fastener	80601153	1
21	LED	80601154	1
22	self tapping screw HC4,8x25	80201281	4
23	gearbox housing green	7660A400	1
24	countersunk screw M4x10	80200632	4
25	grooved ball bearing 6201 LUZ	80410101	1
26	armature plate	76711110	1
27	bevel pinion	85000313	1
28	bush 1	75412554	1
29	compression spring 0,7x8,5x9x1,5	80200802	1
30	bolt	75412425	1
31	bush 2	75412555	1
32	gearbox seal	82000516	1
33	needle sleeve DL 1012	80420116	1
34	locking ring 17/1	80201323	1
35	bevel gear	85000314	1
36	spacer 2	76711425	1
37	locking ring 42/1,75	80201335	1
38	self tapping screw HC 4,2x16	80201271	2
39	work spindle	7660A420	1
40	cap screw 3/8"	85000224	1
41	pt-screw 50x50	80201436	4
42	air guiding ring	80900284	1
43			
44	frame	7660A410	1

No.	Description	Order No.	Pcs
45	spacer 1	76711415	1
46	grooved ball bearing 6004 2RS	80410051	2
47	screw M4x20	80201415	1
48	self tapping screw HC 4,2x9,5	80201269	2
49	shaft seal ring 24x36x7	83000205	1
50			
51			
52	slide	7660P94U	1
53	clamp lever	85000243	2
54	screw M5x12	80201230	2
55	hexagonal nut M5	80201357	2
56	spring washer 12x5,2x0,5	80200725	2
57	fitting washer	80200522	2
58	suction hood	7660P572	1
59	clamp screw	76711583	1
60	pressure washer	76721422	1
61	flange	76711580	1
62	snap bolt	80110101	1
63	face spanner	80430042	1
64	screw M5x40	80201232	3
65	washer 6,4	80201376	1
66	clamping lever	85000236	1
67	lock washer 10	80201510	1
68	clamp nut	85000237	1
69	o-ring 9,5x1,5	83000026	1
70	o-ring	85000238	1
71	star handle screw	85000235	1
72	locking pin 6x36	80201470	1
73	support handle	80901024	1
74	square M5	80201031	2
75	special screw	7660A690	1
76	pressure reducing valve	7660A952	1
77	connecting piece	83000124	1
78	seal ring 1/4"	83000107	2
79	mini ball valve	83000143	1
80	sliding block	7660A585	1
81	toggle screw M4x10	80201407	1
82	water connector	7660A955	1
83	washer 4,3	80201369	1
84	water connector	7660A950	1
85			
86	conductor roller	85000321	8
87	sliding axis	7660P948	2
88	lock washer 5	80201364	4

EDS 181 - 110 V, UK

0660Q000

1	rotor complete	76710100	1
2	stator complete	76710150	1
7	carbon brush 6,3x16x20L41F13	80700040	2

10	PCB / circuit board	80601156	1
17	cable grommet	83000228	1
18	connecting cable 32A, 5m, 4h-St.	7660Q262	1