

**SPARE PARTS CATALOGUE**  
**DRILLING EQUIPMENT: HUSQVARNA DM 200**

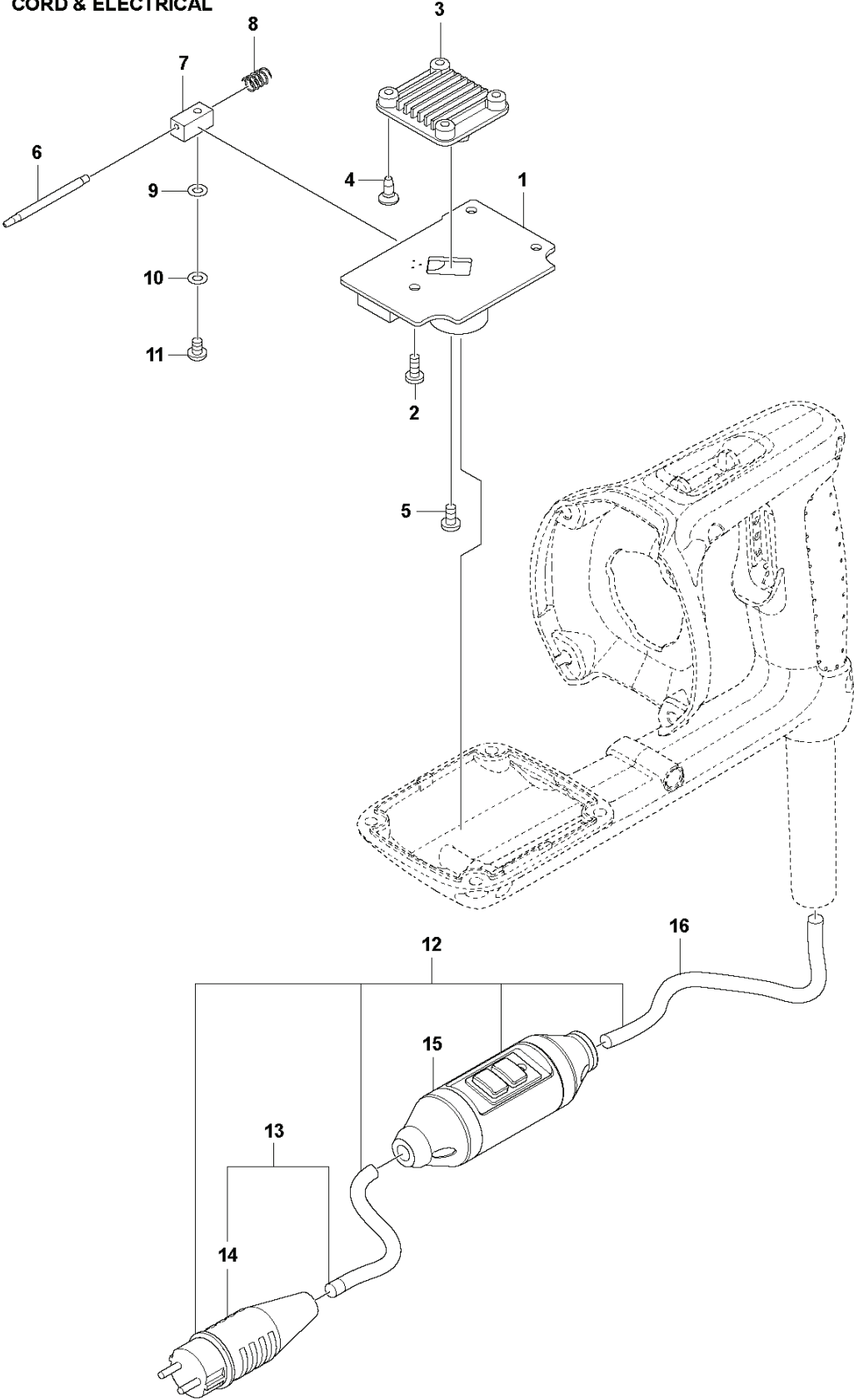
Spare Parts List

# **SPARE PARTS LIST**

DRILLING EQUIPMENT

HUSQVARNA DM 200

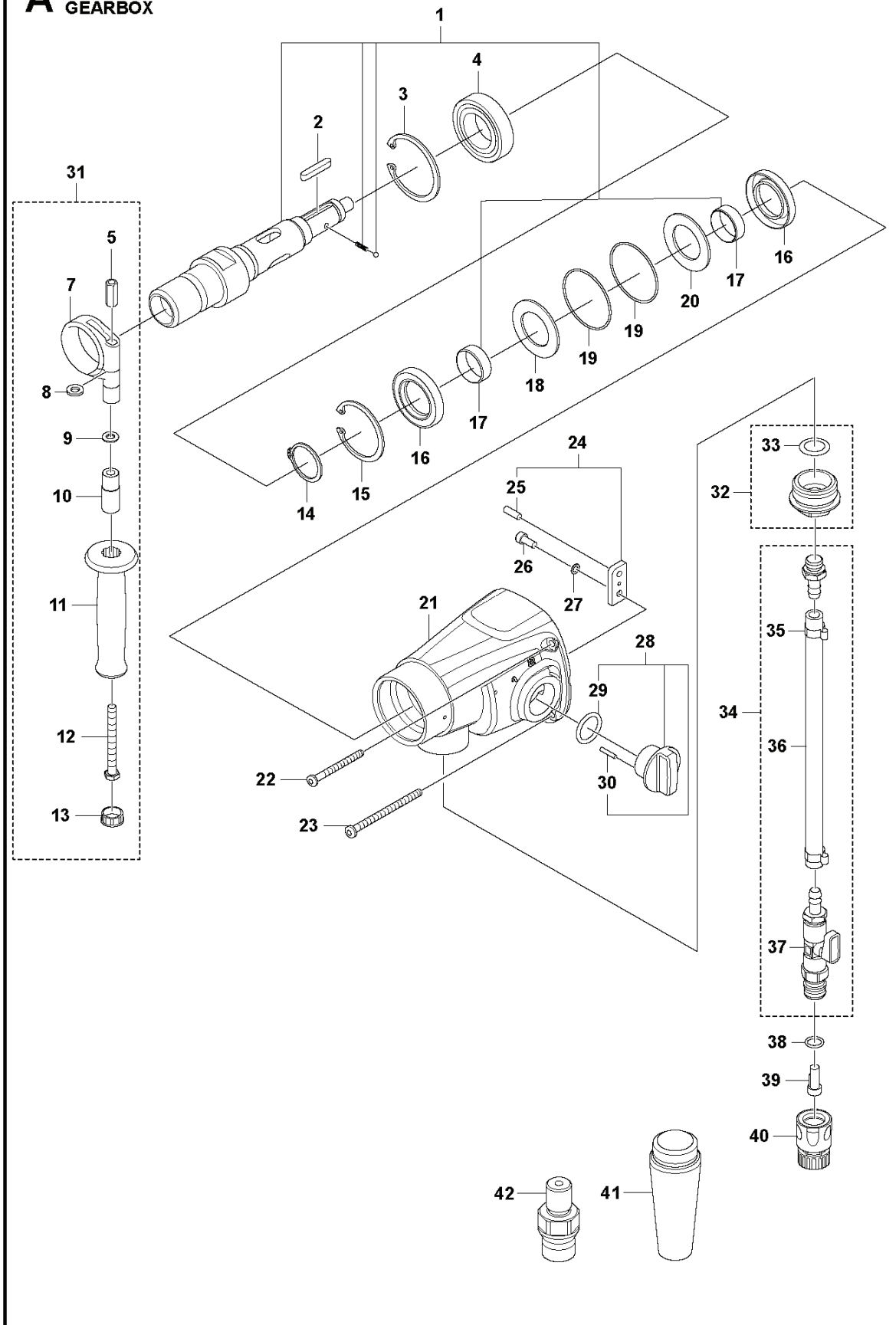
**D** DM 200  
CORD & ELECTRICAL



DRILLING EQUIPMENT

PXM_REF	PXM_PARTNO	DESCRIPTION	PXM_REMARK	QTY.	
1	599779001	PRINTED CIRCUIT BOARD	230V	1	
1	599779002	PRINTED CIRCUIT BOARD	120V	1	
2	599782701	SCREW	F3.5x9.5	3	
3	599779301	COOLER		1	
4	599782901	SCREW	M4x10	4	
5	599782801	SCREW	M3x6	1	
6	599781801	PIN	PE	1	
7	599781701	BLOCK	PE	1	
8	599779501	PRESSURE SPRING		1	
9	543052710	WASHER		1	
10	598809401	WASHER		1	
11	598809001	SCREW		1	
12	599781401	CABLE ASSY	US, Japan	1	
13	598738102	CABLE ASSY	AU	1	12
13	598738104	CABLE ASSY	INCL PLUG, CH	1	12
13	598738101	CABLE ASSY	EU	1	12
13	598738103	CABLE ASSY	BR	1	12
14	598738002	PLUG	120V	1	12
15	598783701	CIRCUIT BREAKER	230V	1	12
16	599781301	CABLE	230V, EU, CH, AU	1	
16	599781302	CABLE	230V, BR	1	
16	599781303	CABLE	120V, UK	1	

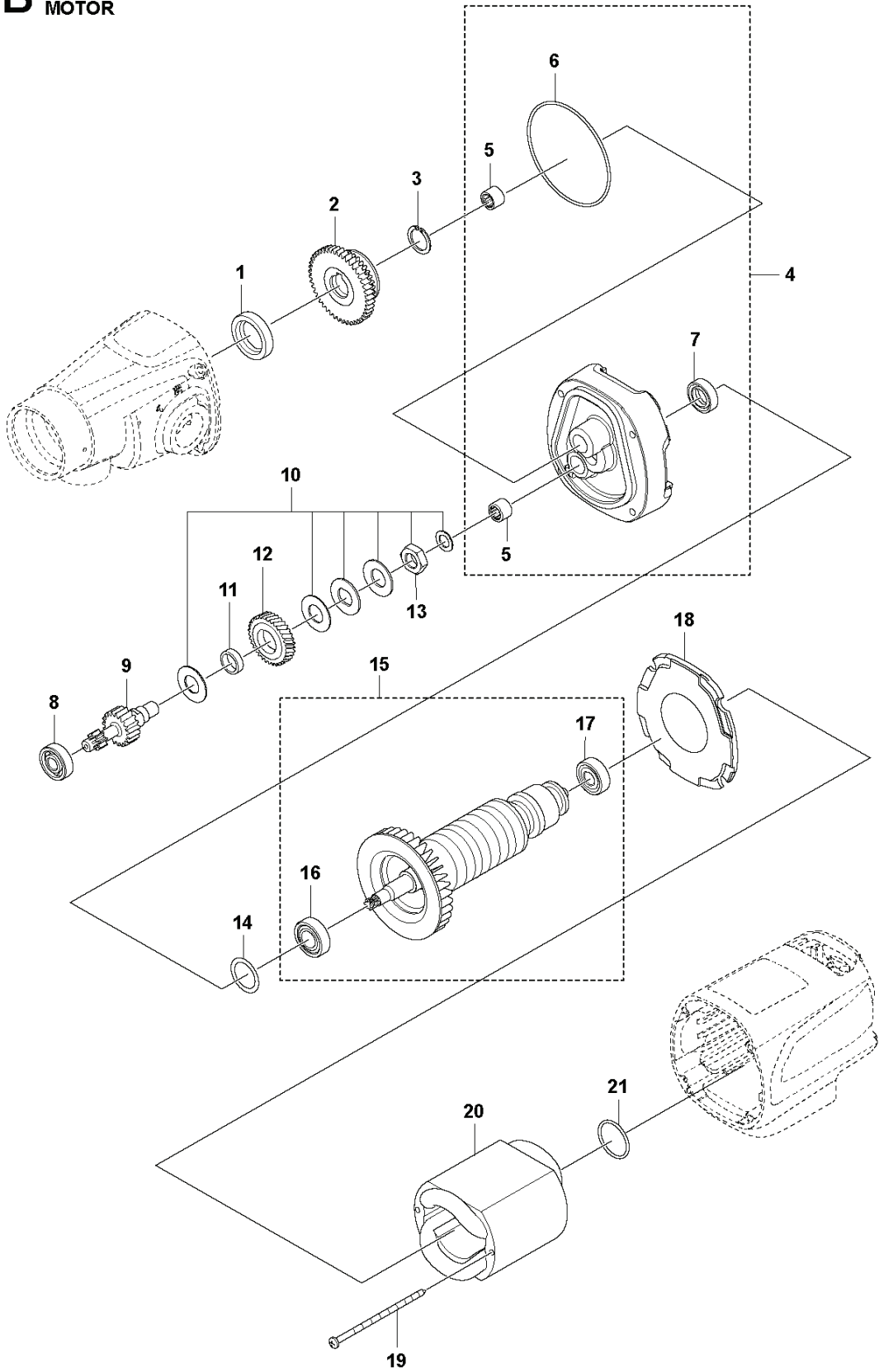
# **A** DM 200 GEARBOX



## DRILLING EQUIPMENT

PXM_REF	PXM_PARTNO	DESCRIPTION	PXM_REMARK	QTY.	
1	599769903	SPINDLE SHAFT	ASSY 32/28.9 Japan	1	
1	599769901	SPINDLE SHAFT	"ASSY 1 1/4" UNC"	1	
2	599772401	PARALLEL KEY	A5x5x30	1	
3	543052745	RETAINER RING		1	
4	543052786	BALL BEARING		1	
5	504023401	NUT		1	31
7	582062601	CLAMPING SLEEVE		1	31
8	504027701	WASHER		1	31
9	543052716	WASHER		1	31
10	588926402	SPACER		1	31
11	574169401	HANDLE		1	31
12	725251151	SCREW EHHM		1	31
13	574398401	LID		1	31
14	543052750	RETAINER RING		1	
15	543052744	RETAINER RING		1	
16	543052771	SEAL		2	
17	599771801	SLEEVE		2	1
18	543052923	BUSHING		1	
19	599772301	O-RING	RDR47x1.5	2	
20	543052924	BUSHING		1	
21	599766901	GEAR HOUSING		1	
22	599782001	SCREW	5.0x50	3	
23	599781901	SCREW	5.0x70	1	
24	599769801	LEVER	GEARSHIFT	1	
25	543052732	PIN		1	24
26	543052661	SCREW		1	
27	543052711	WASHER		1	
28	599769701	GEARSHIFT LEVER		1	
29	598731901	O-RING		1	28
30	543052730	PIN		1	28
31	590869701	HANDLE SUPPORT ASSY		1	
32	501558001	NUT		1	
33	502496504	O-RING		1	32
34	501072201	HOSE ASSY		1	
35	576129701	HOSE CLAMP		2	34
36	581893601	HOSE		1	34
37	501558001	NUT		1	34
38	505103501	O-RING		1	
39	589780701	STRAINER		1	
40	503266004	COUPLER		1	
40	503266003	COUPLER	US	1	
41	575872201	VACUUM SYSTEM		1	
42	531353001	ADAPTER		1	

**B** DM 200  
MOTOR

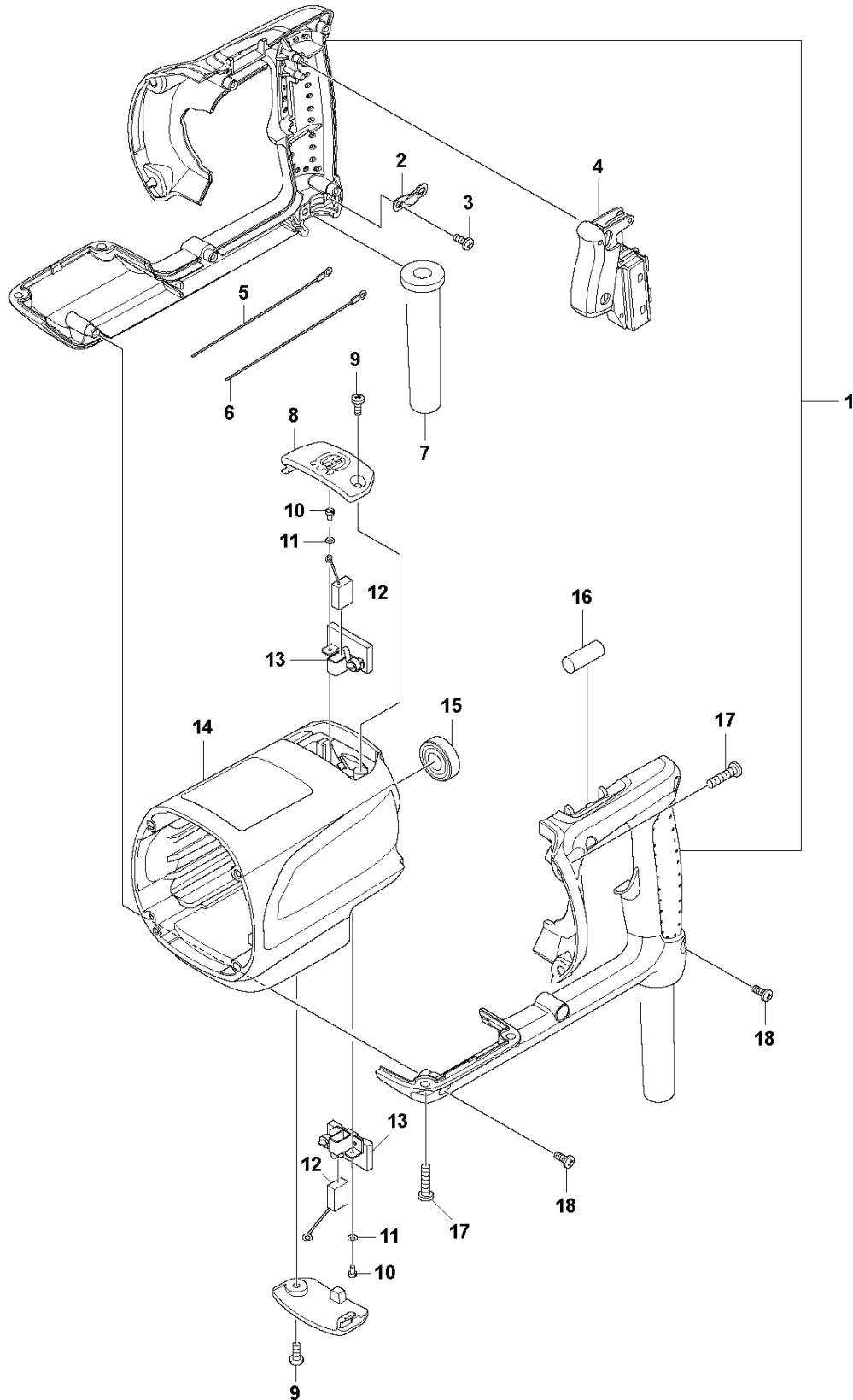


DRILLING EQUIPMENT

PXM_REF	PXM_PARTNO	DESCRIPTION	PXM_REMARK	QTY.	
1	543052769	SEAL		1	
2	599773001	GEAR WHEEL ASSY	SHIFTER	1	
3	599773101	RETAINER RING	AV18	1	
4	599773201	COVER ASSY		1	
5	543052791	NEEDLE BEARING		2	4
6	543052780	O-RING		1	4
7	598733001	RADIAL SEAL		1	4
8	543052789	BALL BEARING		1	
9	599772801	GEAR WHEEL SHAFT		1	
10	599773301	CLUTCH ASSY	SLIP CLUTCH KIT	1	
11	543052912	BEARING		1	
12	599772901	GEAR WHEEL	SLIP CLUTCH	1	
13	543052706	HEXAGON NUT		1	10
14	543052736	WASHER		1	
15	599781501	ROTOR	ASSY 230V	1	
15	599781502	ROTOR	ASSY 120V	1	
16	543052782	BALL BEARING		1	15
17	598965501	BALL BEARING		1	15
18	599772601	AIR CONDUCTOR		1	
19	599782101	SCREW	4.2x90	2	
20	599772501	STATOR	230V	1	
20	599772502	STATOR	120V	1	
21	599772701	O-RING	RDR26x2	1	



**C** DM 200  
REAR HANDLE & ELECTRICAL



DRILLING EQUIPMENT

PXM_REF	PXM_PARTNO	DESCRIPTION	PXM_REMARK	QTY.
1	599778101	HANDLE	REAR	1
2	543052865	CORD		1
3	599782401	SCREW	4x10	2
3	543052692	SCREW		2
4	599778701	TRIGGER		1
5	599781201	CABLE	230V	1
5	599781202	CABLE	120V	1
6	599778602	CABLE	MOTOR 120V	1
6	599778601	CABLE	MOTOR 230V	1
7	543052851	CORD		1
8	599778201	COVER	BRUSH	2
9	599782301	SCREW	4x10	2
10	599782601	SCREW	M3x6	2
11	543052708	WASHER		2
12	599778402	CARBON BRUSH	SET 120V	1
12	599778401	CARBON BRUSH	SET 230V	1
13	599778301	BRUSH HOLDER		2
14	599778001	MOTOR HOUSING		1
15	543052817	LEVEL		1
16	599778801	LEVEL	HORIZONTAL	1
17	599782201	SCREW	5,0x20	8
18	543052691	SCREW		5